

PARISO THIN COAT ACRYLIC

ACRYLIC THERMAL INSULATION SYSTEM



APPLICATION PROCEDURE



1 Fix starter profiles (base & side rails) in place.



2 Apply the MAITE adhesive in dabs or full notched trowel backing coat to the insulation and bond to the substrate.



3 Checking line and level of insulation and bonding of corner beads with MAITE.



4 If specified, anchor the panels after hardening of adhesive dabs, then apply 1st coat of MAITE base layer coating.

APPLICATION



Manual...



...or Sprayed



5 Bed in the AVU mesh into the MAITE base coat. Ensure that the mesh joints overlap by a minimum of 100 mm.



6 Build up the 1st layer of MAITE to fully embed the mesh until it is no longer visible. Level and smooth.



7 When required, apply the base regulator (REVLANE REGULATEUR) with a roller or brush (except when creating the MAITE finishes).



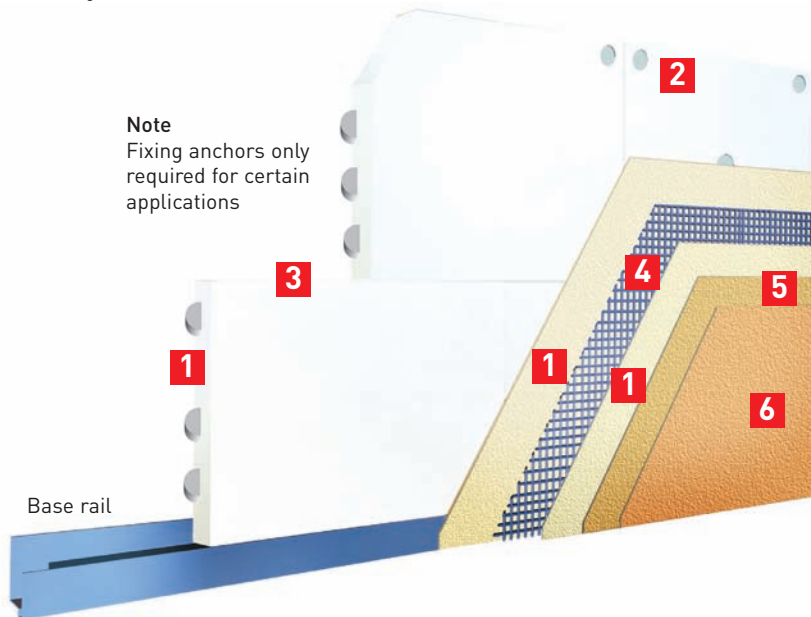
8 Apply the finishing coat of REVLANE TALOCHE/RIBBE or MAITE MONOCOMPOSANT to the desired finish.

PAREX

The information provided in this document results from our knowledge of the products and our experience. On-site results may vary, in particular according to the product application methods adopted. Where application methods not covered by this document are used, customers must request specific additional information and/or carry out a representative test before using the products. The above-mentioned information in no way constitutes a warranty relative to the use of the products. Our general terms and conditions of sale shall prevail, in any event, on the information provided in this document. Prior to application, customers and users are requested to check that they have the latest version of this document.

SYSTEMS COMPONENTS

Product and its function	Product	Consumption	Packaging
1 Mortar MAITE MONOCOMPOSANT For bonding the insulation board, as a base coat with embedded mesh and as a decorative finish	MAITE MONOCOMPOSANT	2.6 to 3.5 kg/m ² (sticking) 4.5 kg/m ² (base coat)	Pallet of 40 x 30 kg bags
2 Expandable anchors to fix insulation (only when required)	FXE 40.60 FXE 70.80	Minimum 5 per panel	Box of 200 fixings
3 Insulating panel in expanded polystyrene, (thickness from 40 to 120 mm) 1200 x 600 mm	Consult Parex on specific grades and requirements		
4 Mesh for base coat - Fibreglass mesh - Reinforced fibreglass mesh	AVU (normal exposure) AVR (exposure to traffic)	1.10 m ² /m ² 1.00 m ² /m ²	50 m x 1 m roll 25 m x 1 m roll
5 Primer (Not required if MAITE MONOCOMPOSANT base coat is coloured to match the top coat)	REVLANE REGULATEUR	150 to 200 kg/m ²	Pallet of 36 x 20 kg bucket
6 - Top Coat - high build - fine swirl - coarse swirl - sand fine - sand coarse - aggregate finish - marble aggregate to spray medium grains	REVLANE ROULE REVLANE RIBBE FIN REVLANE RIBBE GROS REVLANE TALOCHE FIN REVLANE TALOCHE GROS REVLANE PATE GRANULATS REVLANE GRANULATS GM	2.5 to 3.5 kg/m ² 2.5 to 3 kg/m ² 3.2 to 4 kg/m ² 2.5 to 3.5 kg/m ² 3.6 to 4.5 kg/m ² 4.5 kg/m ² 8 kg/m ²	Pallet of 36 x 25 kg bucket Pallet of 36 x 25 kg bucket Pallet of 36 x 25 kg bucket Pallet of 36 x 25 kg bucket Pallet of 36 x 25 kg bucket Pallet of 36 x 25 kg bucket Pallet of 40 x 25 kg bags



ACCESSORIES

Product and its function	Product	Quantity	Packaging
Insulation starter profile/base rail aluminium – length 3 m	ABP 9145 Variable lengths to suit insulation	In accordance with worksite	3 m length
Corner profile - aluminium – length 2.5 m - PVC with mesh – length 2.5 m	CB IA 11 CB 3707	In accordance with worksite	Box of 25 x 2.5 ml Box of 50 x 2.5ml
Expandable hammer fixing anchors to fix starter and other profiles	FXC 6/5	5 fixing anchors per panel	Box of 200 fixings
Aluminium vertical stop profile – length 3m	SP 9245	In accordance with worksite	3m length
Aluminium profile to extend window ledges – length 3 m	SPECIAL	In accordance with worksite	3m length
Mastic for joints	603 LANKOFLEX	In accordance with worksite	Box of 12 cartridges

ATTENTION:

- Quantity indicated is minimum amount where applicable.



European Organisation of Technical Approvals.